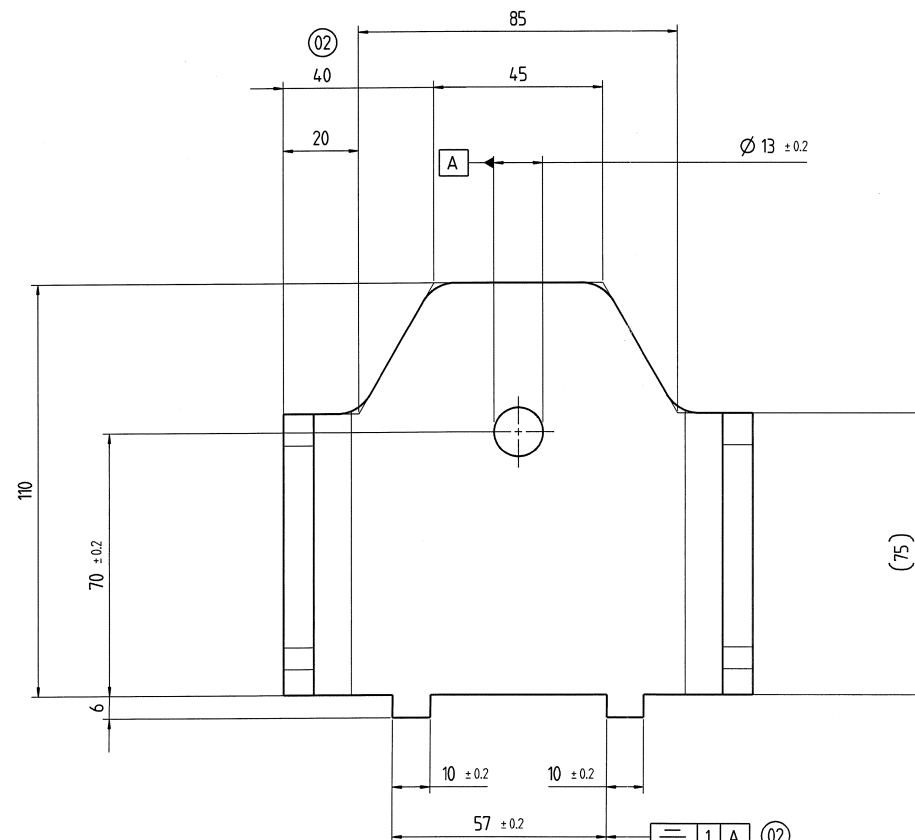
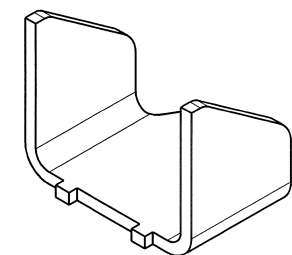


PŘEKLAD

dne: 17. 12. 2014

PROVEDL/A

Ušev up



THOUSAND PART.
NEWOT. RADIUS
RADIUS 0.1750
TELKA ROZVINU

- NOTA :
- Metal sheet thickness : 8 mm
 - Radii without dimension : R = 10
 - Bend radii : R = 10
 - Unfolded length (for info) = 1

2 - 03- 2015
ARCHIV

112 19/01402

Condition at time of delivery	
de-scaled (degree of purity SA 2 1/2 acc. ISO 85(1-1))	X
without burrs acc. WN 11310	
Permissible top-end rounding during flame cutting (also positive bead acc. WN 10572)	
oil-free / free of grease	
oiled	
oiling permissible	X
Indicate the required condition at time of delivery with an X.	

LASER cutting tolerances					
NOTA : min cutting radius without dimensions R = 1 mm unless otherwise specified					
≤ 30	30 < ≤ 120	120 < ≤ 400	400 < ≤ 1000	1000 <	
± 0,5	± 0,8	± 1,0	± 1,5	± 2,0	

First angle projection	02	Oiled -> Oiled permissible	T48720
General tolerance (GT) in mm	Index	alteration	Change no
Size range	Inspection dim.	Material: S235JR following EN10025-2	Fit
GT coarse	Auxiliary dim.	Blank no:	Toler.
L 1 2 3 4	Date	Name	Weight: in kg
1 2 4 6	Drawn 9.12.2014	J.Fanley	1.3
Lengths (L) and angle (α) ± GT	Checked 13.12.2014	R.Paolier	PROD.
Tolerance Symbols ISO 1101	Auth'd 22.1.2014	J.LaCasse	Scale 1:1
roundness = 1/2a-Tol.	Mcheck 20.1.2014		Sheet: 1 of 1
straightness/flatness = GT			
concentricity/run out = GT			
symmetry = GT			
parallelism = GT			
position = GT			
Languages: en,fr	Confidential document	Repl.	Orig.
	Refer to protection notice ISO 9006		